

Elevation A // 3,603 sq.ft



# Farrell

4 Bedrooms (Optional 5)  
4.5 Bathrooms (Optional 5.5)

Orientation of home may be reversed and purchaser agrees to accept the same. Steps and porches may vary at any exterior entrance ways due to grading variance. Actual usable floor space may vary from the stated floor area. All renderings are artists concept. Dimensions, specifications and architectural detailing subject to minor modifications. E & O.E. Roofline and adjoining model types may vary due to siting.

# Farrell

4 Bedrooms (Opt. 5)  
4.5 Bathrooms (Opt. 5.5)

## Elevation A

3,603 sq.ft.

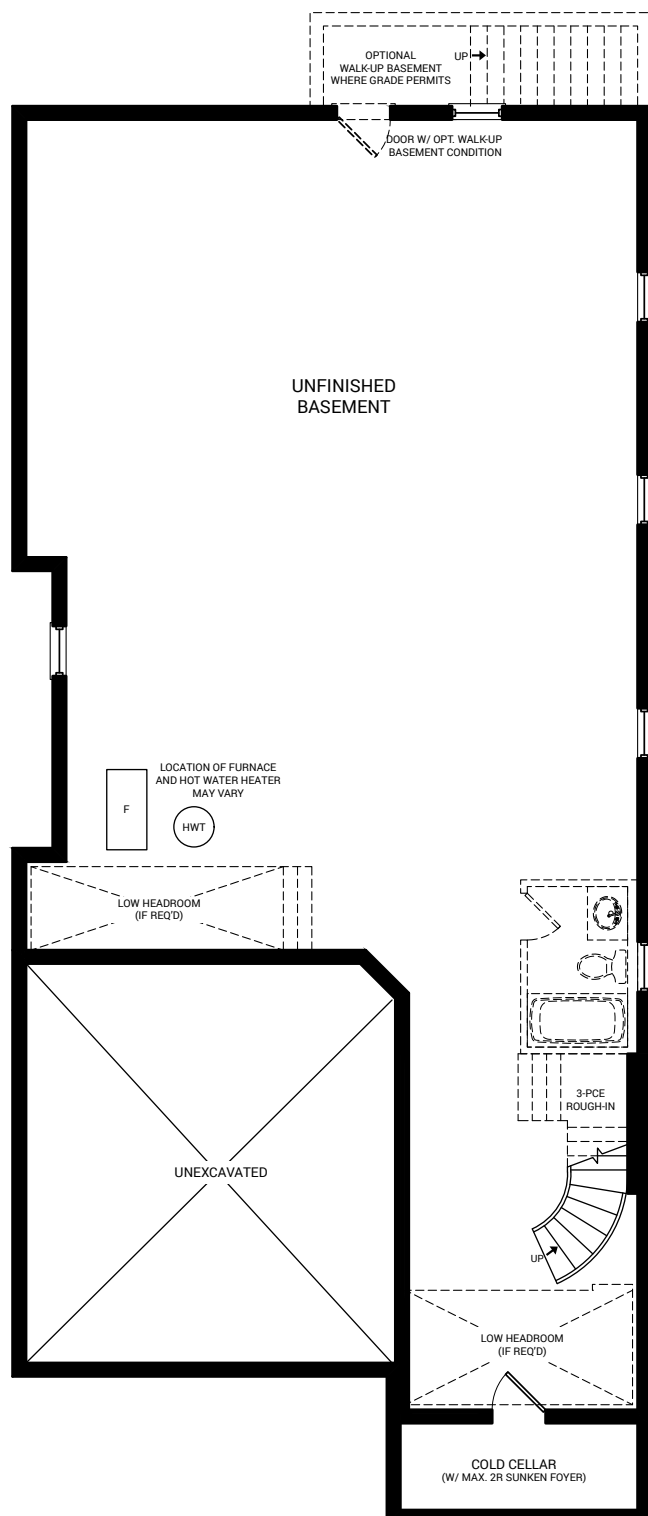
1,625 sq.ft. Ground Floor  
1,978 sq.ft. Second Floor

## Elevation B

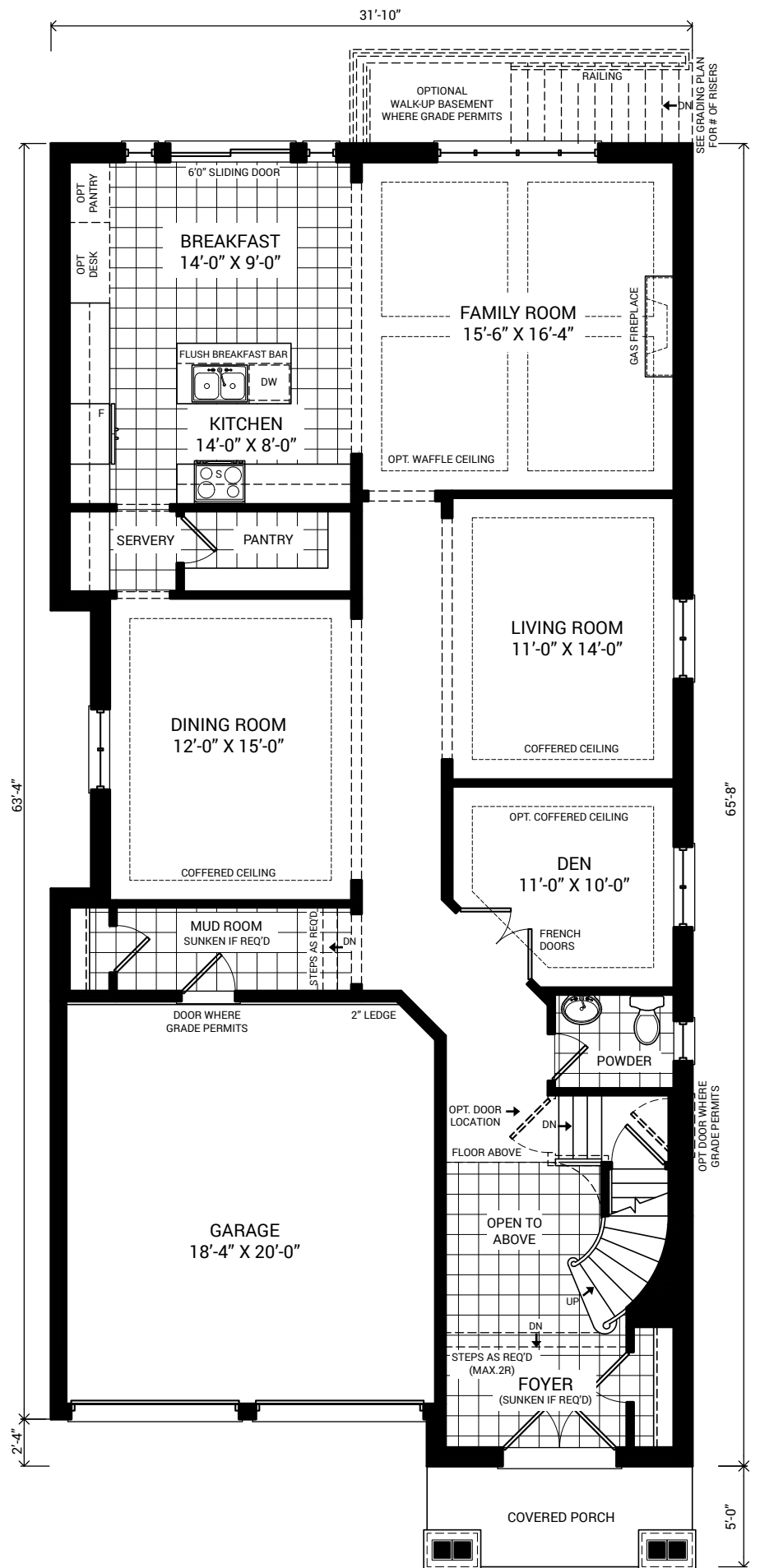
3,572 sq.ft.

1,625 sq.ft. Ground Floor  
1,947 sq.ft. Second Floor

## Basement

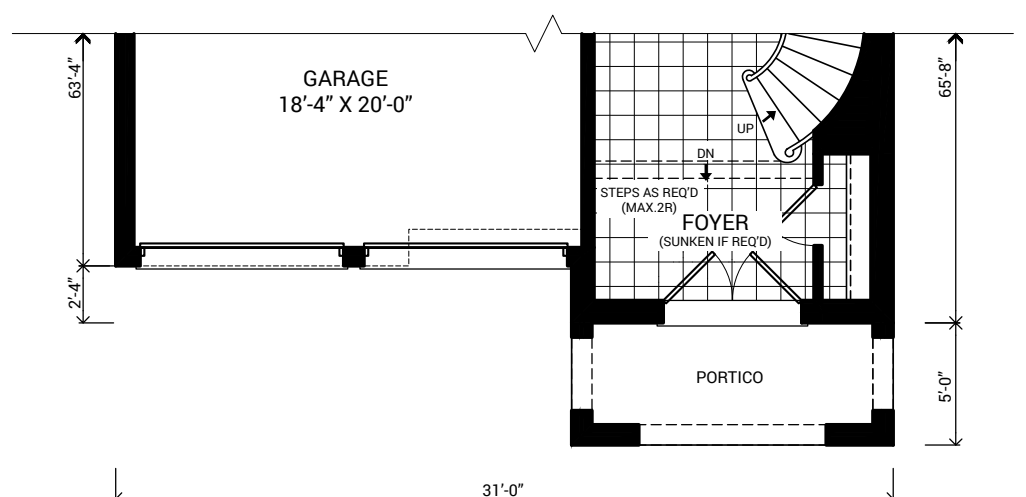


## Ground Floor Elevation "A"

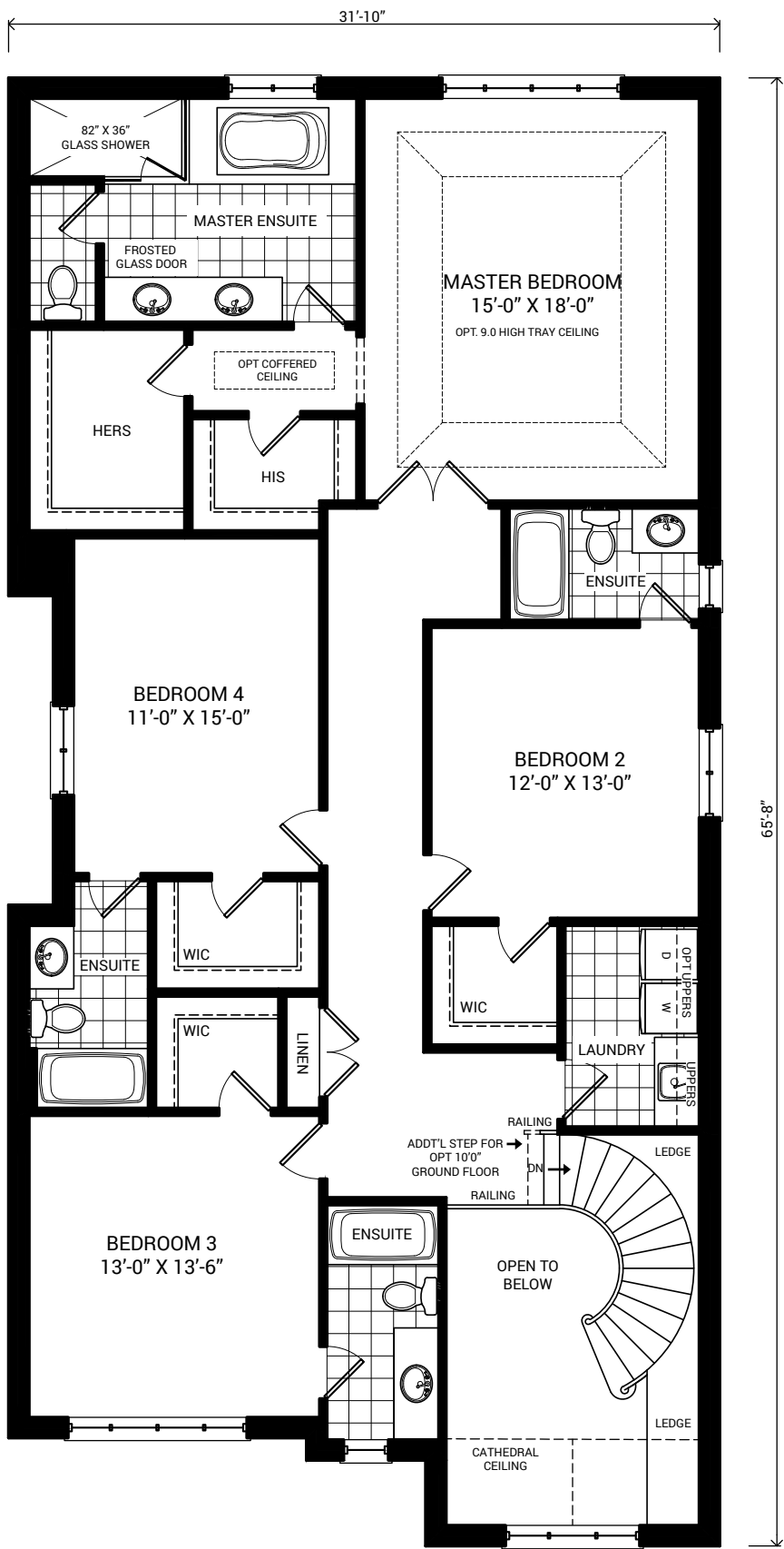


## Ground Floor Elevation "B"

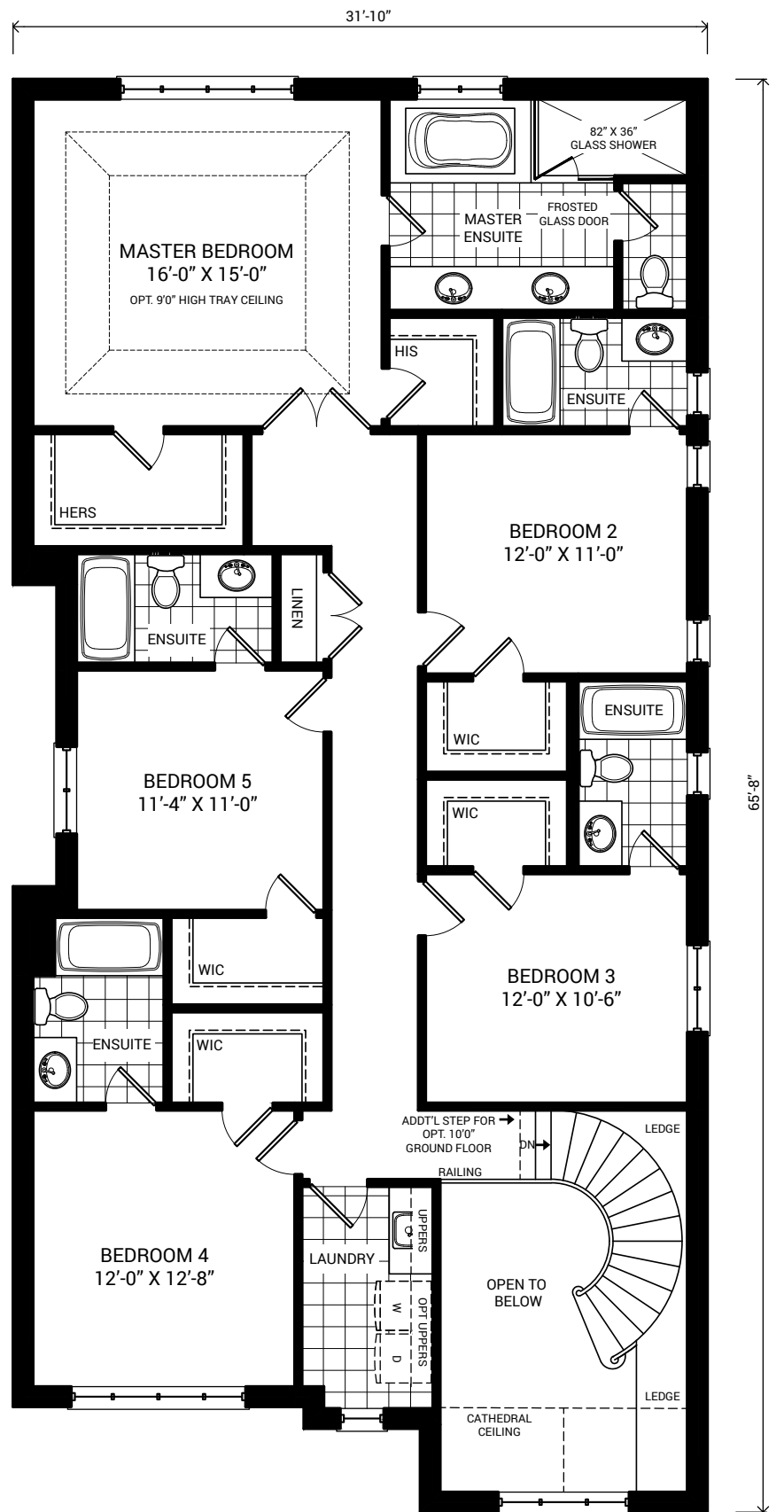
For continuation refer to ground floor Elevation "A"



**Second Floor Elevation "A"**

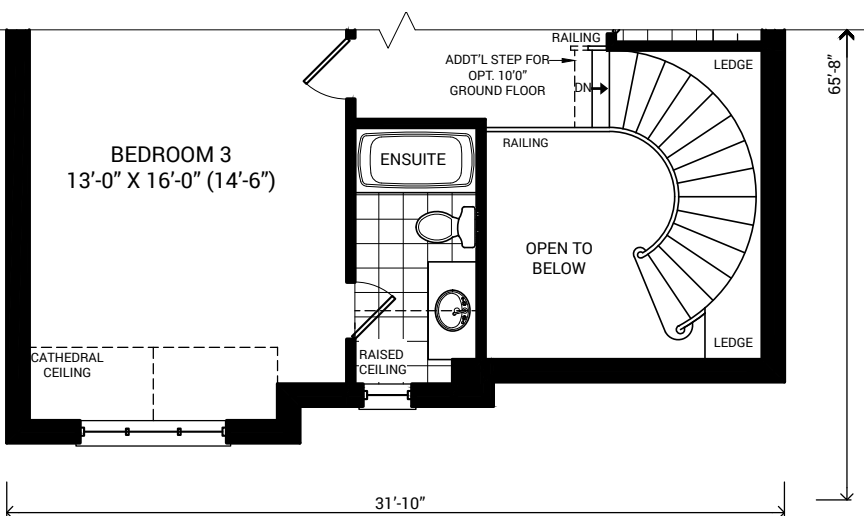


**Optional Second Floor Elevation "A"**



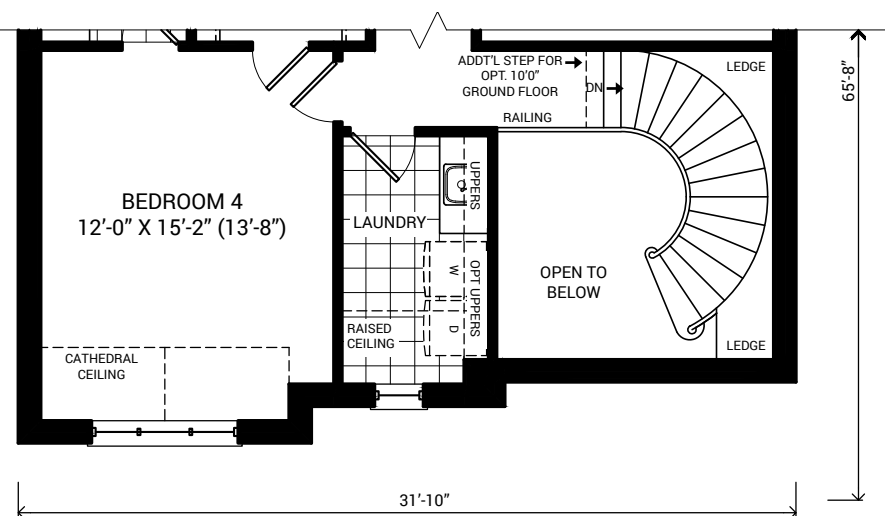
**Second Floor Elevation "B"**

*For continuation refer to second floor Elevation "A"*



**Optional Second Floor Elevation "B"**

*For continuation refer to optional second floor Elevation "A"*



SOUTHWEST BRAMPTON

# OLDE TOWN

A NEIGHBOURHOOD RENAISSANCE.

Olde Town is a community of premier homes in southwest Brampton. This project is located within an existing subdivision at Steeles Ave and Mavis Rd, and will be easily accessed by connecting streets. A luxury development that breathes new life into this historic area, this collection of high-end homes built on spacious 30'- 45' lots serves as a neighbourhood renaissance. A gateway to the place you always wanted to be.

Elevation B // 3,572 sq.ft



**HH** HALLETT  
HOMES  
HALLETT HOMES.COM