

Elevation A // 3,963 sq.ft



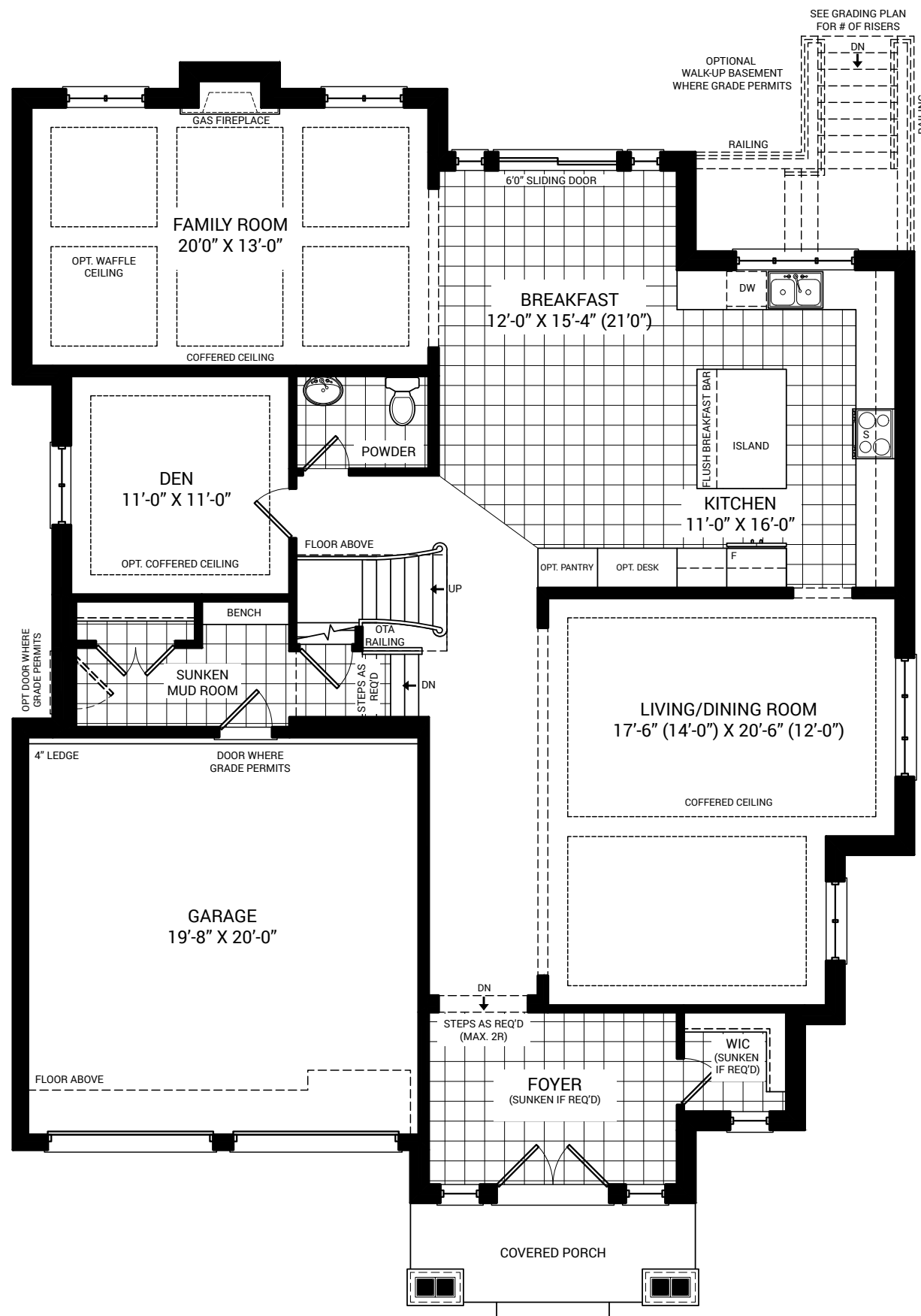
Rowan

4 Bedrooms (Optional 5)
4.5 Bathrooms (Optional 5.5)
Model Number: 38-07

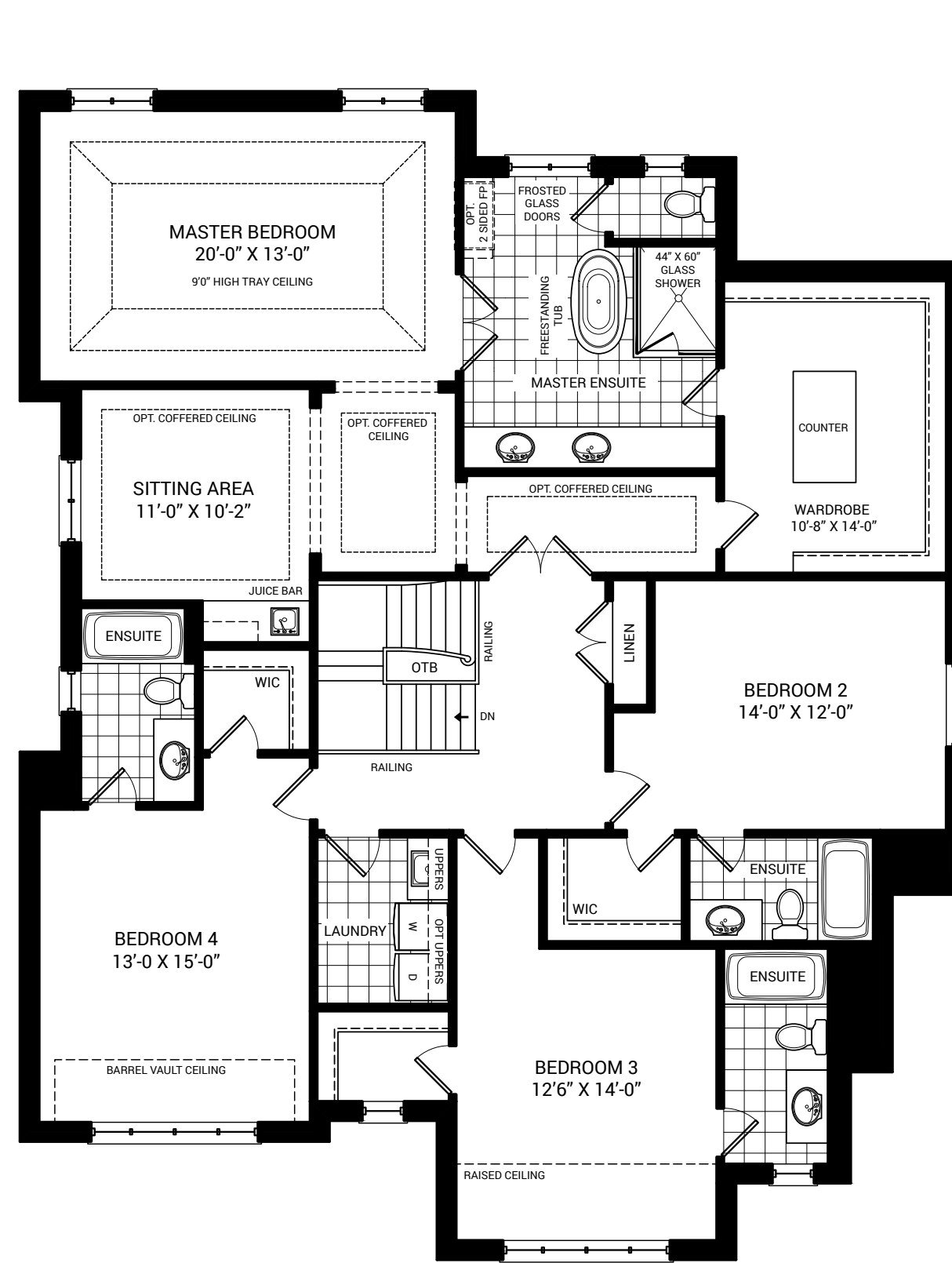
Orientation of home may be reversed and purchaser agrees to accept the same. Steps and porches may vary at any exterior entrance ways due to grading variance. Actual usable floor space may vary from the stated floor area. All renderings are artists concept. Dimensions, specifications and architectural detailing subject to minor modifications. E & O.E. Roofline and adjoining model types may vary due to siting.

Rowan

Ground Floor Elevation "A"



Second Floor Elevation "A"



4 Bedrooms (Opt. 5)
4.5 Bathrooms (Opt. 5.5)

Elevation A
3,963 sq.ft.

1,804 sq.ft. Ground Floor
2,158 sq.ft. Second Floor

Elevation B
3,984 sq.ft.

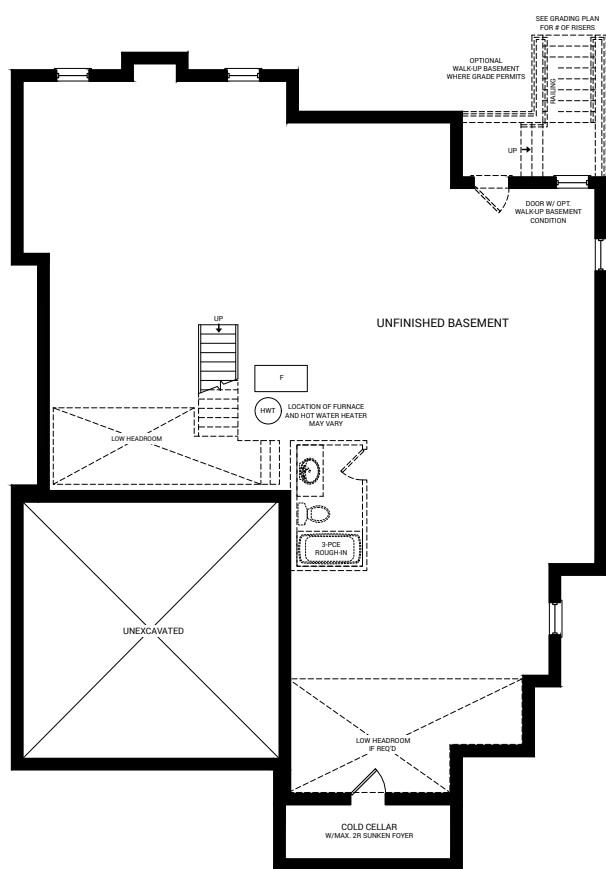
1,804 sq.ft. Ground Floor
2,180 sq.ft. Second Floor

Elevation C
3,963 sq.ft.

1,804 sq.ft. Ground Floor
2,158 sq.ft. Second Floor

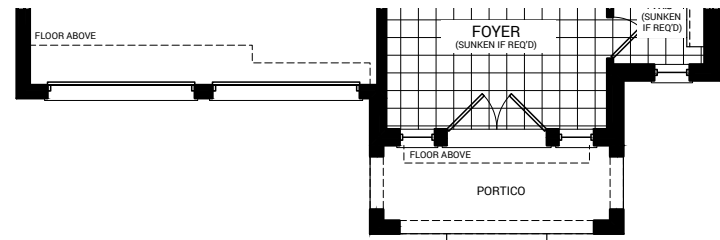
Model Number: 38-07

Basement



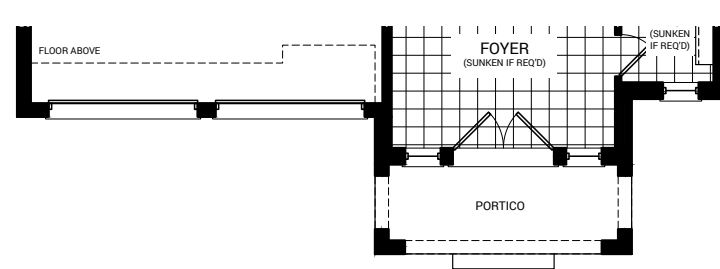
Ground Floor Elevation "B"

For continuation refer to ground floor Elevation "A"



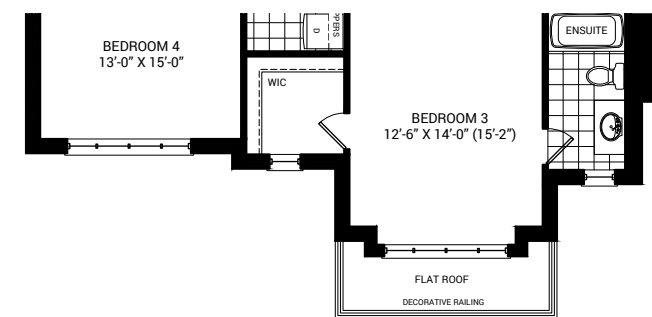
Ground Floor Elevation "C"

For continuation refer to ground floor Elevation "A"



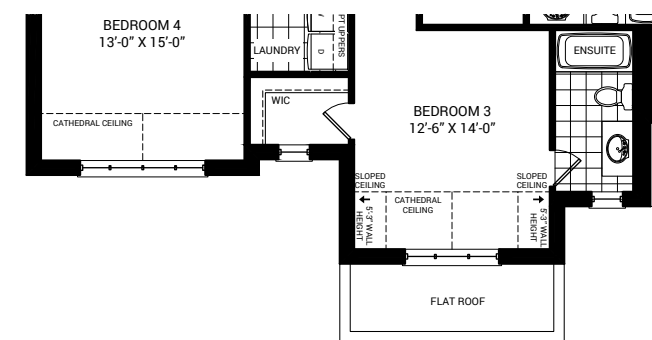
Second Floor Elevation "B"

For continuation refer to second floor Elevation "A"

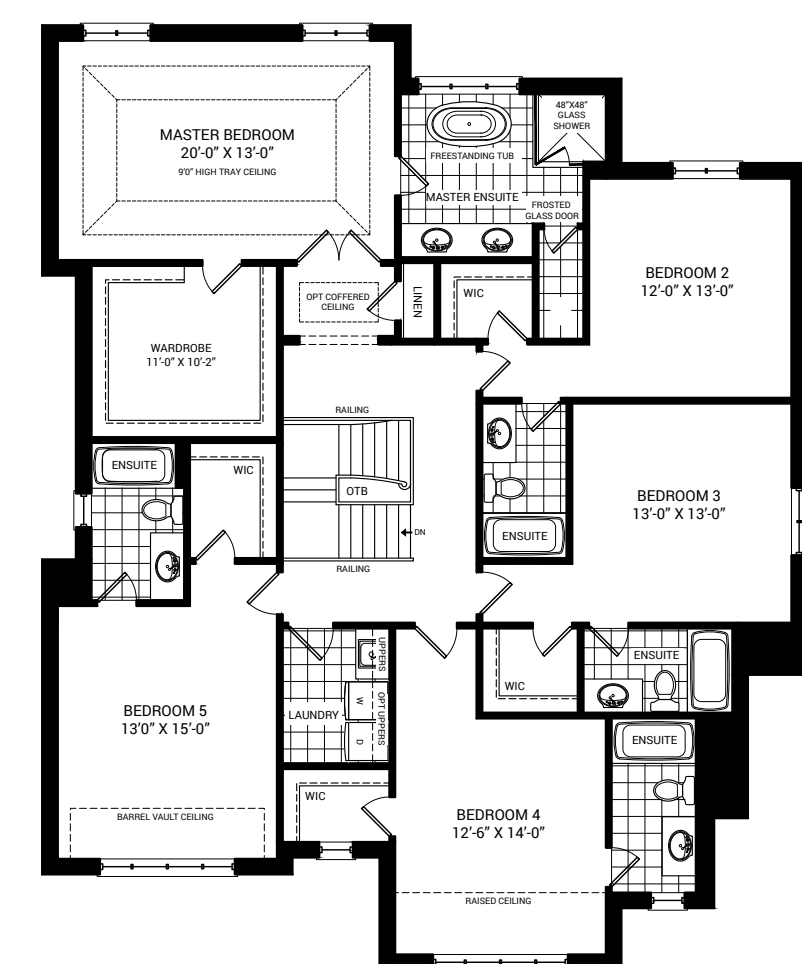


Second Floor Elevation "C"

For continuation refer to second floor Elevation "A"



Optional 5 Bedroom Elevation "A"



SOUTHWEST BRAMPTON

OLDE TOWN

A NEIGHBOURHOOD RENAISSANCE.

Olde Town is a community of premier homes in southwest Brampton. This project is located within an existing subdivision at Steeles Ave and Mavis Rd, and will be easily accessed by connecting streets. A luxury development that breathes new life into this historic area, this collection of high-end homes built on spacious 30' - 45' lots serves as a neighbourhood renaissance. A gateway to the place you always wanted to be.

Elevation B // 3,984 sq.ft



Elevation C // 3,963 sq.ft

