

Elevation A // 3,617 sq.ft (includes 986 sq.ft. of finished basement)



# Rutledge

4 Bedrooms  
4.5 Bathrooms  
Model Number: 38-01

Orientation of home may be reversed and purchaser agrees to accept the same. Steps and porches may vary at any exterior entrance ways due to grading variance. Actual usable floor space may vary from the stated floor area. All renderings are artists concept. Dimensions, specifications and architectural detailing subject to minor modifications. E & O.E. Roofline and adjoining model types may vary due to siting.

# Rutledge

4 Bedrooms  
4.5 Bathrooms

Elevation A  
2,631 sq.ft.

1,230 sq.ft. Ground Floor  
1,401 sq.ft. Second Floor

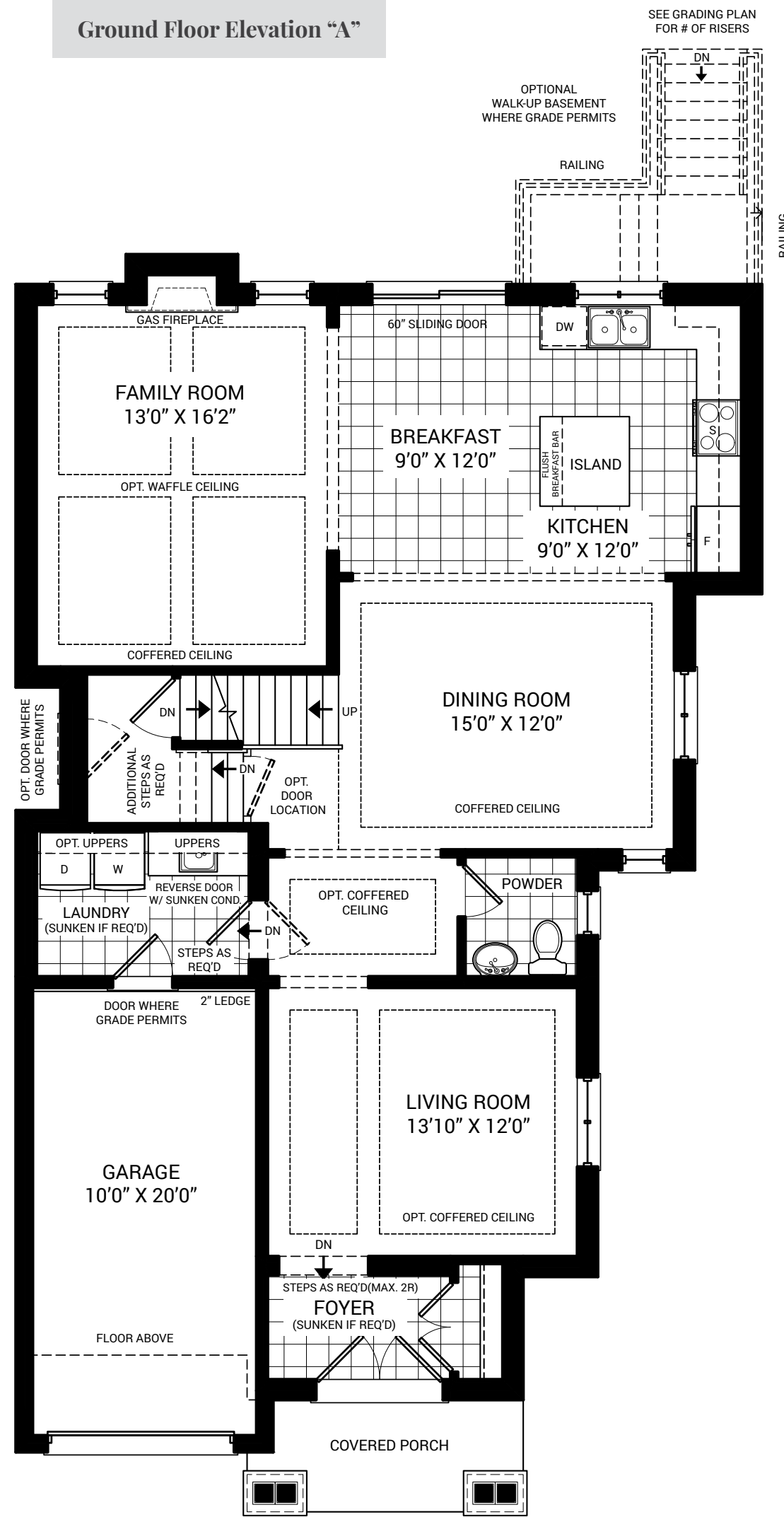
Elevation B  
2,626 sq.ft.

1,230 sq.ft. Ground Floor  
1,396 sq.ft. Second Floor

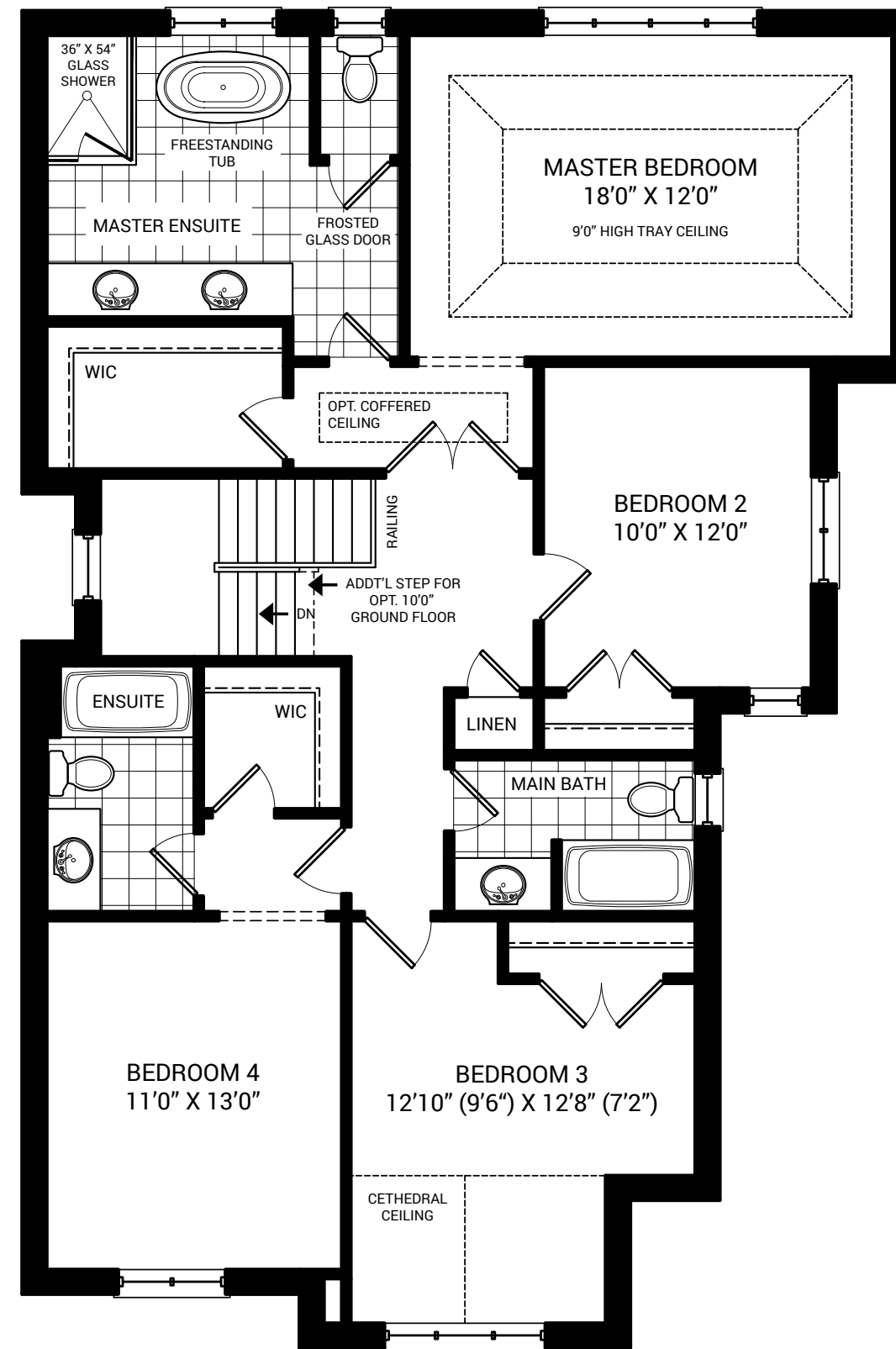
Basement  
986 sq.ft.

Model Number: 38-01

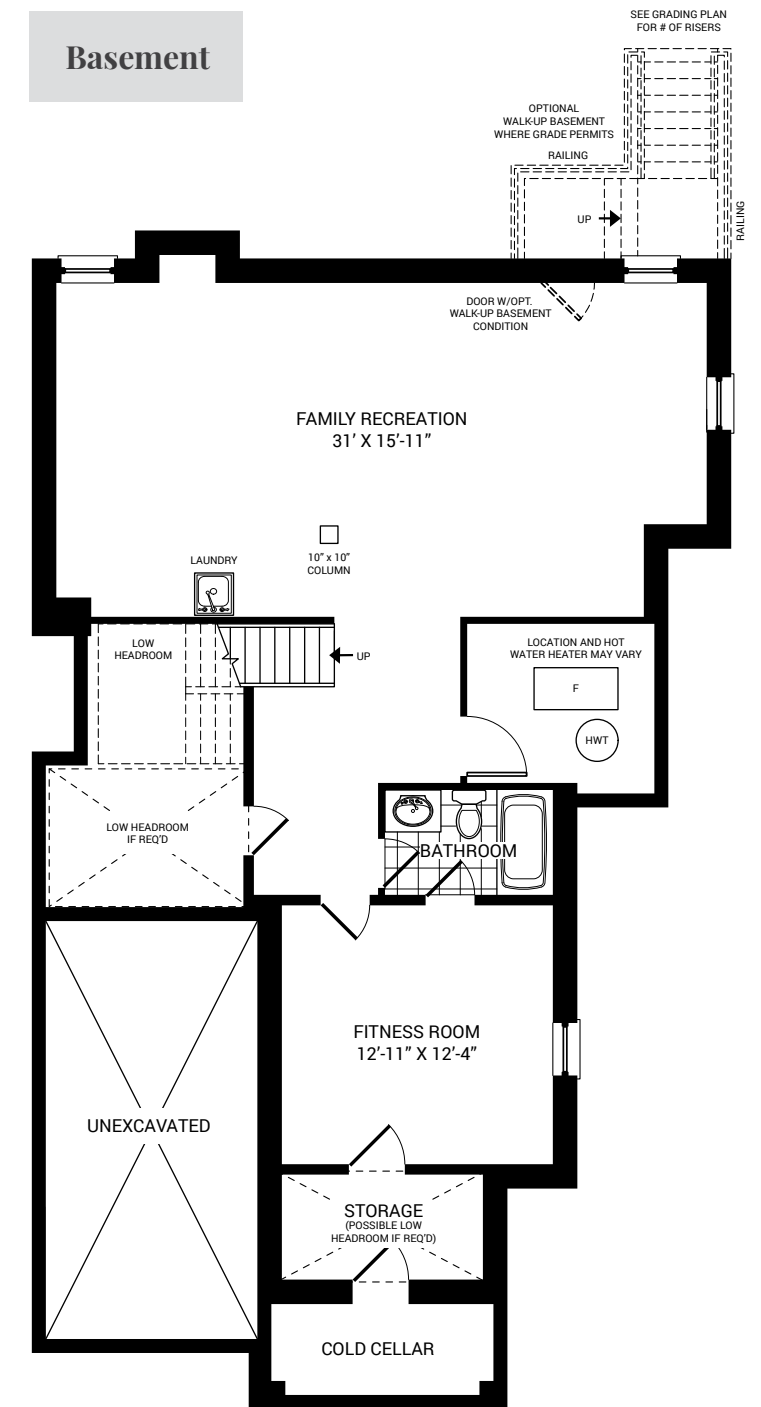
Ground Floor Elevation "A"



Second Floor Elevation "A"

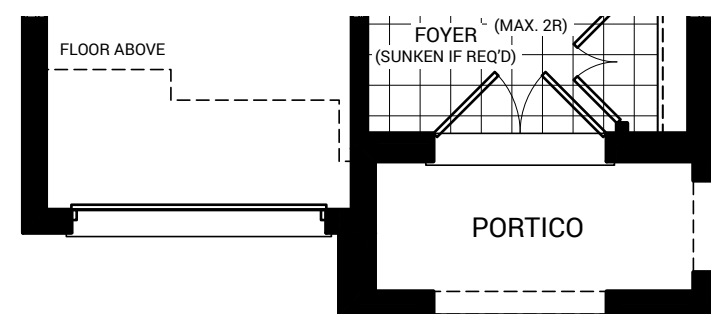


Basement



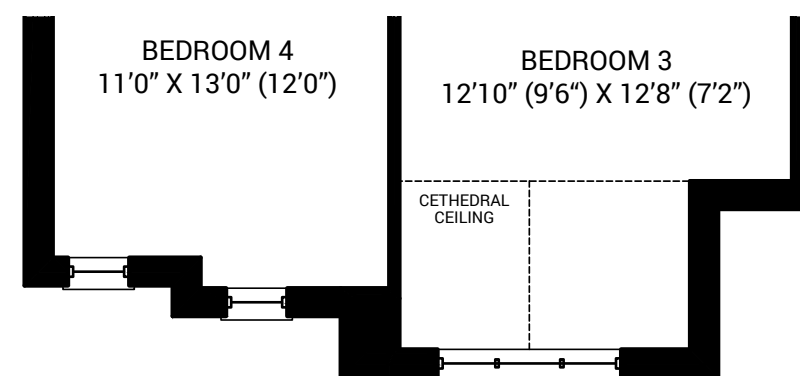
Ground Floor Elevation "B"

For continuation refer to ground floor Elevation "A"



Second Floor Elevation "B"

For continuation refer to second floor Elevation "A"



SOUTHWEST BRAMPTON

# OLDE TOWN

A NEIGHBOURHOOD RENAISSANCE.

Olde Town is a community of premier homes in southwest Brampton. This project is located within an existing subdivision at Steeles Ave and Mavis Rd, and will be easily accessed by connecting streets. A luxury development that breathes new life into this historic area, this collection of high-end homes built on spacious 30'- 45' lots serves as a neighbourhood renaissance. A gateway to the place you always wanted to be.

Elevation B // 3,612 sq.ft. (includes 986 sq.ft of finished basement)



**HH** HALLETT  
HOMES

HALLETTTHOMES.COM