

Elevation A // 2,872 sq.ft



Robinson

4 Bedrooms
3.5 Bathrooms

Orientation of home may be reversed and purchaser agrees to accept the same. Steps and porches may vary at any exterior entrance ways due to grading variance. Actual usable floor space may vary from the stated floor area. All renderings are artists concept. Dimensions, specifications and architectural detailing subject to minor modifications. E & O.E. Roofline and adjoining model types may vary due to siting.

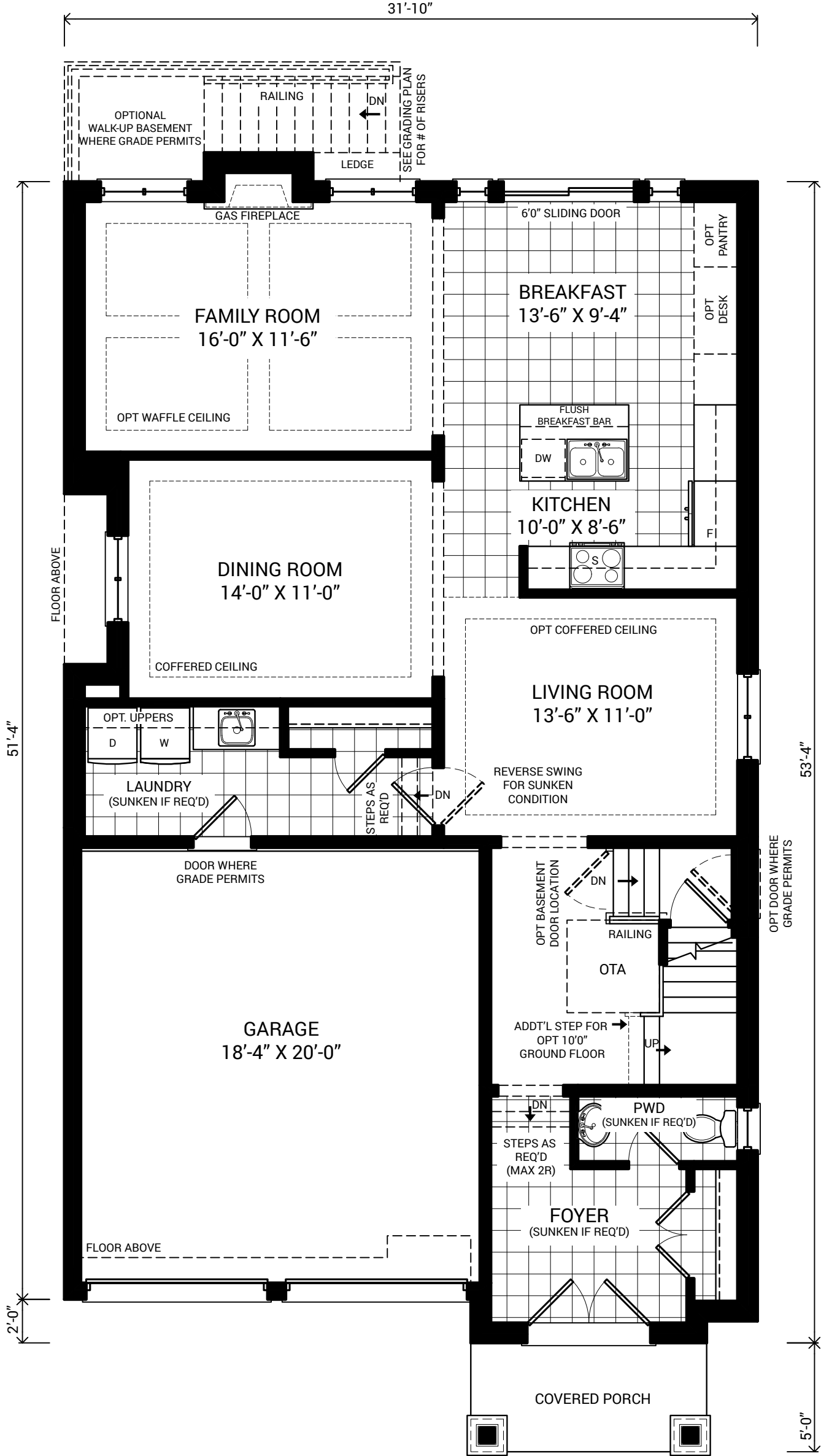
Robinson

4 Bedrooms
3.5 Bathrooms

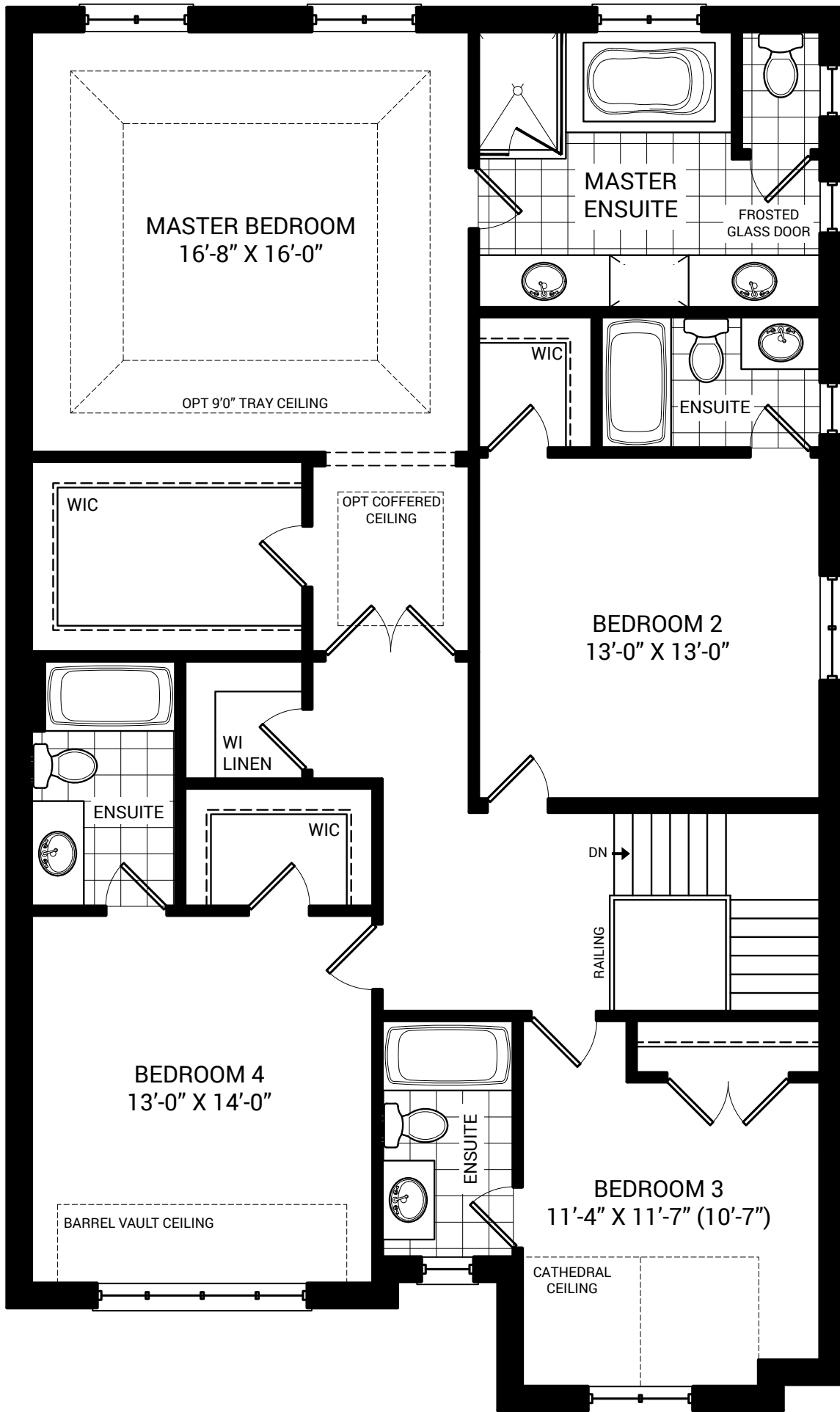
Elevation A
2,872 sq.ft.

1,253 sq.ft. Ground Floor
1,619 sq.ft. Second Floor

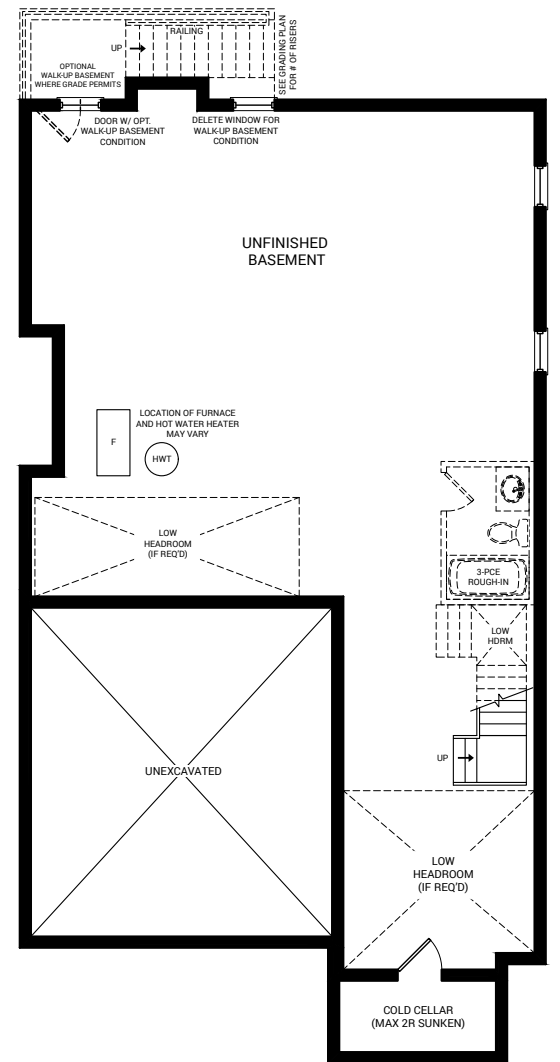
Ground Floor Elevation "A"



Second Floor Elevation "A"



Basement



SOUTHWEST BRAMPTON

OLDE TOWN

A NEIGHBOURHOOD RENAISSANCE.

Olde Town is a community of premier homes in southwest Brampton. This project is located within an existing subdivision at Steeles Ave and Mavis Rd, and will be easily accessed by connecting streets. A luxury development that breathes new life into this historic area, this collection of high-end homes built on spacious 30'- 45' lots serves as a neighbourhood renaissance. A gateway to the place you always wanted to be.

 HALLETT
HOMES

HALLETT HOMES.COM